

Revolutionary New Type of Film

Kochi ElastiCAL Film
Save time, labor and cost

- ★ Easy to apply (and remove)
- ★ No water required
- ★ Stay floor clean
- ★ Reusable
- ★ No sticky feeling

Now, "Kochi ElastiCAL Film" is debut for your disguise work on clay models.

It is amazingly easier, time and waste saver application film to compare with self-adhesion type or wet dinoc. It could be so called DRY-DINOC.

With ElastiCAL, not only adhesive but also water is not necessary for its application.

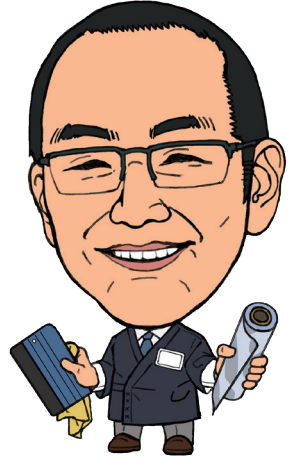
What you have to do is just put ElastiCAL on clay model and palm gently the surface of ElastiCAL with your hand or using felt sheet type of material. Even if you make mistake, with the ElastiCAL application you can peel it off and apply again on clay model.

**ONLY
3 STEPS**
ElastiCAL Film

1. Peel the protection film
2. Apply
3. Rub gently

Unique strong points !

- ★ No water needed to apply
- ★ Easy to peel, easy to apply
- ★ High illuminance
- ★ Long-lasting gloss
- ★ Light Weight ★★★★★



President / Yuzuru Kochi



※ Product image

Item#	KC-EFS100SP
Item Name	Kochi ElastiCAL Film - Silver
Size	39" x 33 yd (1000mm x 30m)
Weight	11 Lb (5Kg)
Color	Silver
Adhesive	No adhesive used, but sticks naturally
Application Temp	68 - 86 F (20 - 30°C)

Tip

When you reuse, and feel the film doesn't stick well with some clay or dirt, cleaning the film using neutral detergent shall back up the character. When you apply the film under low temperature, please make the film or clay surface warm to get the best results.

Review of monitoring test ElastiCAL film got a lot of positive comments from professional clay modelers



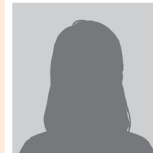
Clay modeler
(25yrs experience)

It's a great impression of use. It sticks naturally and feels so smooth. I think it's easier to use than Dinoc, because ElastiCAL is thinner. It keeps high gloss after applying still and looks like 'painted'. Awesome.



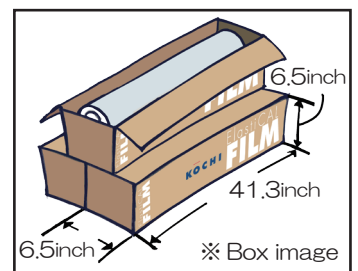
Clay modeler
(20yrs experience)

Since no water required for applying, I can save time and labor and this is a big advantage, I think. Even if you overlaid the film partially, you almost see no seam on it. I can't wait for trying it with 1/1 model.



Clay modeler
(8yrs experience)

It is wonderful because it's pretty easy to apply and reusable. Now I'm free of stress for applying films. I can work with it without any worry. I also like it's thin.



※ Box image



CALL NOW



81-3-3469-4607



INSPIRAID, INC.



info@inspiraid.com



http://www.inspiraid.com



3-1-10 Komaba Meguro-ku
Tokyo 153-0041 Japan



81-3-3469-1600

